



GOOD MORNING
Have Good Trading Day

THURSDAY



Price is what you pay.
Value is what you get.

- Warren Buffet



MARKET PULSE

INDIAN INDICES

NAME	CMP	NET CH.	%
SENSEX	24793	+134	+0.55
NIFTY	7531	+46	+0.62

INDIAN ADR'S

SYMBOL	CLOSE	GAIN/ LOSS %
DRREDDY	47.77	+0.41
HDFCBANK	56.34	+0.35
ICICIBK	6.42	+0.19
INFY	17.84	-0.08
TATAMOTOR	25.78	+0.60
WIPRO	11.83	+0.03

FII AND MF ACTIVITY

SYMBOL	In Crs.
FIIs Eq (Provisional)	462.86
FIIs Index Future	154.62
FIIs Index Options	741.65
FIIs Stock Future	-1253.49
FIIs Stock Options	89.16
DII's Eq (Provisional)	-823.56

CURRENCY

RBI RATE	09-MAR-2016
RUPEE - \$	67.4632
EURO	74.0611
YEN 100	59.9200
GBP	95.6965

MARKET PULSE

GLOBAL INDICES

NAME	CMP	NET CH.	%
DOW	17000	+36	+0.21
NASDAQ	4674	+25	+0.55
NIKKEI	16806	+163	+0.98
HANG SENG	20124	+127	+0.64
SGX NIFTY	7548	+14	+0.19

WORLD COMMODITIES

FUTURE	U\$\$	CHANGES
CRUDE	38.22	-0.07
NATURAL GAS	1.769	+0.017
GOLD	1252.30	-5.1
SILVER	15.295	-0.071
COPPER	2.2350	+0.0025

WORLD EVENTS

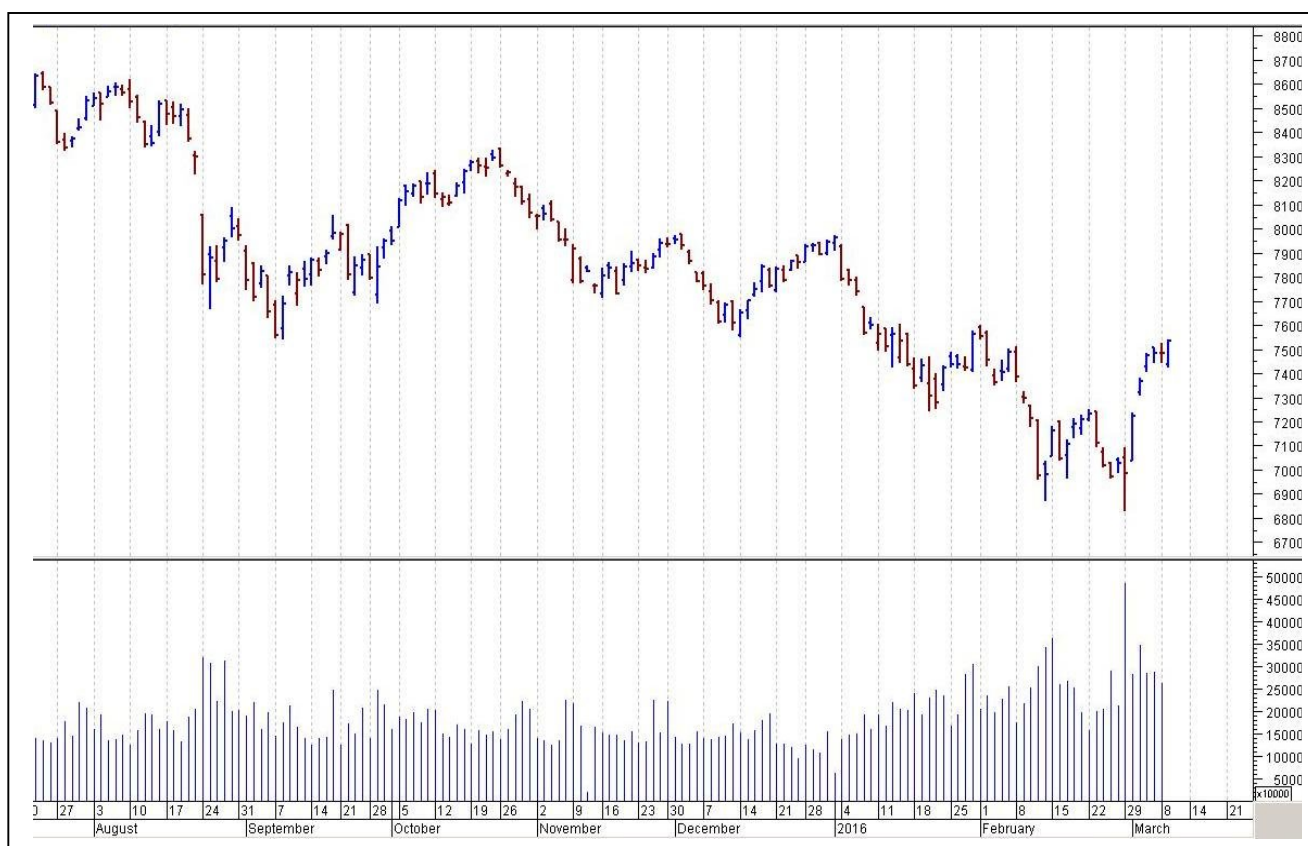
- US:Unemployment Claims
- UK:RICS House Price Balance

TOP STORY

- Infosys Block Trade Today -75 lk shares (0.3% of O/S shareholding) worth \$130 mn to be exchanged -Price Range `1149-1178/share
- MPHASIS: Blackstone, Apollo Global in race to acquire co (ET) Tech Mahindra pulls out of race (BS)
- Telecom Cos in focus: SC to take up call drops issue today
- SBI to raise remaining amount from the `12000 Cr approved by the board via private placement
- Dalmia Bharat allots 75 Lakh Shares To KKR Mauritius Cement For Non-cash Consideration
- PTC India commissioned 30 MW Wind Power Project in MP
- DHFL board approved fund raising of `5100 Cr (Secured or Unsecured Debt)
- Corporation Bank board has Raising of Capital of the Bank to the extent of Rs.1000 Cr
- Uniply Industries To acquire Plywood & Blackboard Mfg Plant from Euro Decors for `42 Cr
- Greenply Industries Permission for excise duty exemption & refund for Plywood Unit & Tizit (Nagaland)



NIFTY CHART



MARKET COMMENTARY

Indian markets witnessed a volatile trade on Wednesday when major averages after making a gap-down start and remaining weak for most part of the day, gathered momentum in the final hours to post gains of over half a percent. Earlier, the start was sluggish tracking the weak global cues and lacking any support from domestic front. Traders remained concerned with comments from Chief economic adviser Arvind Subramanian, who in an effort to put some pressure off the RBI, said that we should not peg all the hopes on a rate cut by the Reserve Bank of India to cure the economy from all that plagues it. However, markets got some support with Finance Minister Arun Jaitley's statement that Indian economy is improving, also the Moody's Investors Service stated that though the prolonged decline in oil prices and weaker expansion in Chinese economy have dimmed growth prospects of several economies, but it does not signal a threat of global recession. For today's Nifty likely to trade in the range between 7545 – 7565 in the upper side and 7525 – 7505 in the lower side.

MARKET LEVELS

	CMP	SUPPORT LEVELS				RESISTANCE LEVELS			
NIFTY	7531	7525	7505	7485	7455	7545	7565	7585	7615
USDINR	67.47	67.4	67.35	67.25	67.2	67.55	67.65	67.7	67.75



BULK DEALS (BSE)

SCRIP	CLIENT NAME	BUY/SELL	QUANTITY	PRICE
CAREERP	FRANKLIN TEMPLETON ASSET MANAGEMENT INDIA PRIVATE LIMITED	S	194,823	100.01
TRANSPEK	RUCHIT BHARAT PATEL	S	101,180	414.49
TRANSPEK	ACIRA CONSULTANCY PRIVATE LIMITED	B	100,000	415

BULK DEALS (NSE)

SCRIP	CLIENT NAME	BUY/SELL	QUANTITY	PRICE
CAREERP	FRANKLIN TEMPLETON ASSET MANAGEMENT INDIA PRIVATE LIMITED A	SELL	205177	100.02
SANCO	MINSHI CREATION PRIVATE LIMITED	BUY	56000	26.7
SANCO	CHP FINANCE PVT LTD	SELL	104000	26.7
SANCO	IFL PROMOTERS LIMITED	SELL	8000	24.9

SCRIP'S IN F&O BAN

(To resume for normal trading below 80% of market wide limit required)

JISLJALEQS

Initial Public Offering (IPO)

Company Name	Security type	Issue Start Date	Issue End Date	Status
NIL				



NIFTY 50 STOCKS: SUPPORT & RESISTANCE						
Symbol	Close	Support 1	Support 2	Pivot Point	Resistance1	Resistance2
ACC	1244	1235	1226	1242	1251	1259
ADANI PORTS	226	221	215	227	232	238
AMBUJACEM	204	202	200	204	206	208
ASIANPAINT	876	868	859	878	887	897
AXISBANK	417	410	403	414	421	425
BAJAJ-AUTO	2317	2300	2282	2317	2335	2352
BANKBARODA	143	141	138	142	144	146
BHARTIARTL	335	330	325	333	338	340
BHEL	108	105	102	106	109	111
BOSCH LTD	17933	17422	16911	17711	18221	18510
BPCL	799	790	781	806	815	831
CAIRN	137	132	128	135	140	142
CIPLA	529	522	515	529	536	542
COALINDIA	323	321	319	324	325	328
DRREDDY	3220	3188	3155	3207	3239	3259
GAIL	350	346	342	351	355	360
GRASIM	3632	3551	3469	3601	3683	3733
HCLTECH	816	805	795	812	822	828
HDFC	1129	1108	1088	1127	1147	1166
HDFCBANK	1025	1011	997	1020	1034	1044
HEROMOTOCO	2817	2794	2772	2812	2834	2852
HINDALCO	81	80	78	81	82	83
HINDUNILVR	840	830	819	837	847	854
ICICIBANK	216	212	207	215	219	223
IDEA	106	104	102	106	108	109
INDUSINDBK	934	919	903	928	944	953
INFY	1179	1153	1128	1168	1194	1209
ITC	320	315	310	318	323	326
KOTAKBANK	660	650	641	657	667	674
LT	1213	1187	1162	1204	1229	1246
LUPIN	1824	1812	1800	1828	1840	1857
M&M	1236	1219	1201	1228	1245	1255
MARUTI	3576	3478	3380	3539	3637	3698
NTPC	127	126	125	127	127	128
ONGC	205	202	199	204	207	209
PNB	83	81	78	82	84	85
POWERGRID	140	138	135	139	141	142
RELIANCE	1042	1026	1009	1035	1051	1060
SBIN	183	180	177	182	185	187
SUNPHARMA	861	844	827	854	871	881
TATAMOTORS	348	339	331	344	352	357
TATAPOWER	59	58	57	58	59	60
TATASTEEL	295	286	276	291	301	306
TCS	2357	2312	2266	2341	2386	2415
TECHM	464	448	433	458	474	483
ULTRACEMCO	2992	2961	2930	2981	3012	3032
VEDL	88	85	83	87	89	91
WIPRO	538	534	529	538	542	547
YESBANK	791	763	736	778	806	821
ZEEL	395	388	381	392	400	404



CORPORATE ACTION / BOARD MEETINGS

NSE Download Ref.No.:NSE/CML/31882:- Face Value Split - Rama Steel Tubes Limited from Rs. 10 to Rs. 5 w.e.f. March 14, 2016

NSE Download Ref.No.:NSE/CML/31886:-BharatiDefence and Infrastructure Ltd shall be transferred back to 'EQ' series from 'BE' w.e.f. March 14, 2016

NSE Download Ref.No.:NSE/CML/31901:- Face Value Split - Precision Wires India Limited from Rs. 10 to Rs. 5 w.e.f. March 21, 2016

NSE Download Ref.No.:NSE/CML/31924:- Face Value Split - Tide Water Oil Co. (India) Limited from Rs. 10 to Rs. 5 w.e.f. March 16, 2016

BOARD MEETINGS

COMPANY NAME	DATE	PURPOSE	RS. PER SH.
COALINDIA	14-Mar-16	Dividend	27.4
SUVEN	14-Mar-16	Dividend	2
NAVNETEDUL	14-Mar-16	Dividend	2.2
NEYVELILIG	14-Mar-16	Dividend	0.3
RAMASTEEL	14-Mar-16	Bonus 4:1/Face Value Split From Rs10To Rs5	
GODREJIND	15-Mar-16	Dividend	1.75
CROMPGREAV	15-Mar-16	Scheme Of Arrangement	
CENTURYPLY	15-Mar-16	Dividend	
BAJAJHLDNG	16-Mar-16	Dividend	
BAJFINANCE	16-Mar-16	Dividend	
BALKRISIND	16-Mar-16	Dividend	
BANARBEADS	16-Mar-16	Dividend	
AJMER	16-Mar-16	Dividend	
ALKYLAMINE	16-Mar-16	Dividend	
ASHOKA	16-Mar-16	Dividend	0.8
BAJAJ-AUTO	16-Mar-16	Dividend	
BAJAJFINSV	16-Mar-16	Dividend	
ONGC	16-Mar-16	Dividend	
IRB	16-Mar-16	Dividend	
PLASTIBLEN	16-Mar-16	Dividend	
MUNJALSHOW	16-Mar-16	Dividend	
MUTHOOTFIN	16-Mar-16	Dividend	2

NEWS & RUMOURS:

- Gold (Spot Dollar) major support = \$1230/\$1200 & Resistance = \$1281/\$1321.
- Crude oil range->\$32 to \$42.
- U.S. Stocks Rise as Commodities Rebound, Euro Falls before ECB: - U.S. equities edged higher with the price of crude and metals, while European shares climbed on speculation the region's central bank will boost stimulus tomorrow. Government bonds fell and gold slid.
- Economists [surveyed by Bloomberg](#) forecast that the ECB will deliver a package of easing measures in its attempts to bolster price growth. That's offering support to European markets after a slide in China's exports tempered a three-week rally that had restored almost \$5 trillion to the value of equities worldwide. The International Monetary Fund said Tuesday that volatile financial markets and low commodity prices are heightening risks for the global economy; while Double Line Capital's Jeffrey Gundlach [said](#) betting on stocks is a "big losing proposition."
- WTI oil futures extend rally after bullish weekly stockpile data: - West Texas Intermediate oil extended strong gains in North America trade on Wednesday, after data showed that oil supplies in the U.S. rose less than feared last week.
- U.S. natural gas futures extend rebound off 18-year lows: - U.S. natural gas futures rose for the fourth straight day on Wednesday, extending a recent rebound from 18-year lows as traders continued to close out bets on lower prices.
- Gold prices slide more than \$10 as oil, stocks recover: - Gold futures were down sharply in North American trade on Wednesday, as the metal's safe-haven appeal was dented amid a recovery in oil prices and global equity markets.

TRENDS & OUTLOOK – DATE: 10- Mar- 2016

PRECIOUS METALS:

COMMDITY (MCX)	S2	S1	PIVOT POINT	R1	R2
GOLD (Apr)	29001	29240	29525	29777	30040
SILVER (May)	34900	36100	37200	38400	39300

BASE METALS

COMMDITY (MCX)	S2	S1	PIVOT POINT	R1	R2
COPPER (Apr)	323	329	335	341	346
ZINC (Mar)	115.50	118.20	120.75	123.45	126.30
LEAD (Mar)	119.10	121.30	124.20	126.45	129.40
NICKEL (Mar)	567	581	594	615	630

ENERGY

COMMDITY (MCX)	S2	S1	PIVOT POINT	R1	R2
CRUDE OIL (Mar)	2305	2410	2530	2655	2727
NATURAL GAS (Mar)	106	113	118	124	129

DATE TALKS : TODAY'S ECONOMIC DATA :

RBNZ Rate Statement, CPI & PPI of China, ECB Rate Statement, ECB Press Conference, Unemployment Claims, Natural Gas Storage, 30-y Bond Auction.



Registered Office

Indira House, 3rd Floor, 5 Topiwala Lane,
Opp. Lemington Road Police Station, Grant Road (East), Mumbai - 400007.

Corporate Office

'Ramavat House' E-15, Saket Nagar, Indore - 452018 (M.P.)

Customer Care

Tel: +91-731-4097170/ 71/ 72/ 73/ 74 M. +91 93031 72345

Email: customercare@indiratrade.com www.indiratrade.com



INSTITUTIONAL DEALING UNIT

Africa House, 5, Topiwalla Lane, Lamington Road, Mumbai, 400007

Tel: +91 22 30080678 Fax : +91 22 23870767 Email : ie@indiratrade.com

Disclaimer

This report is for private circulation within the Indira Group. This report is strictly confidential and for information of the selected recipient only and may not be altered in any way, transmitted to, copied or distributed, in part or in whole, to any other person or to the media or reproduced in any form. This report should not be construed as an offer or solicitation to buy or sell any securities or any interest in securities. It does not constitute a personal recommendation or take into account the particular investment objectives, financial situations, or any such factor. The information, opinions estimates and forecasts contained here have been obtained from, or are based upon, sources we believe to be reliable, but no representation of warranty, express or implied, is made by us to their accuracy or completeness. Opinions expressed are our current opinions as of the date appearing on this material only and are subject to change without notice.